



# INSTALLATION GUIDE

## Advance - Carpet Planks

issue 07/24

pg 1/2

For EcoBac and Comfort-Backed/Mix-Bac Planks

### STEP 1

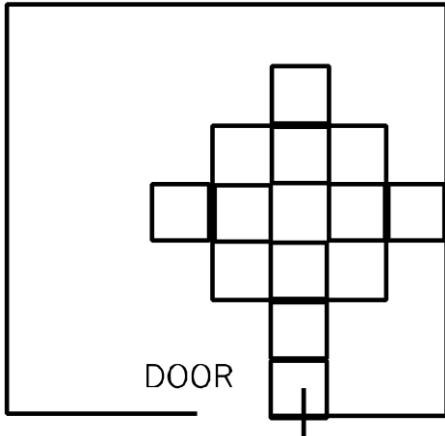
A pallet can carry up to 20 boxes. To prevent damage to the carpet planks, 2 pallets should never be stacked on top of each other. There is a batch number on every box. Before laying, check that the tiles are from the same batch. It is important that batch numbers are not mixed within an installation in view of very slight colour variations which may occur from batch to batch.

### STEP 2

To ensure optimal conditioning of plank backings, the temperature for fitting must be between 10°C and 25°C, at a relative air humidity of approximately 60%. The planks should be removed from their outer boxes and laid loosely on the floor for 24 hours before laying so that they can become conditioned to room temperature guaranteeing stability.

### STEP 3

There is an arrow on the back of each plank which indicates pile direction. If laid in a Monolithic (Broadloom) or Brick style, all the tiles should be laid with the arrows pointing in the same direction - see the diagrams on page 2. If laid Quarter turn (Checkerboard) style the arrows should be at 90 degrees to the adjacent plank – also see diagram on page 2. Start laying with a full tile laid at the door, continuing to the middle of the room in parallel with the main wall (see diagram below).



Make sure that no pile material is trapped between the planks. This central point is a starting point for the gradual placement of the other pieces. It is necessary to apply good pressure when butting the planks together for a neat fit.

(continued)



# INSTALLATION GUIDE

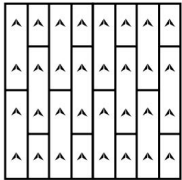
issue 07/24

pg 2/2

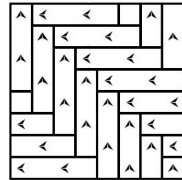
## Advance - Carpet Planks For EcoBac and Comfort-Backed/Mix-Bac Planks

### STEP 4

The planks can be laid in different ways:



Ashlar

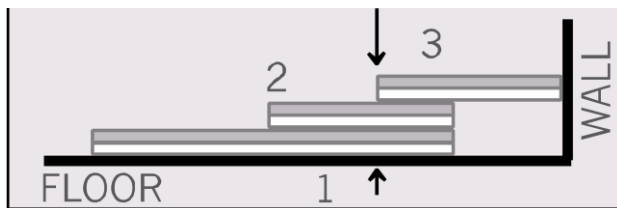


Herringbone

Installation of Carpet Planks — Directional vs Quarter Turn, some patterns allow the carpet planks to be laid either using a Directional method or by Quarter Turn method. Other patterns is such that they can only be laid "Quarter Turn" or in a "Random" manner. More information may be found on the relevant product data sheet on our website [www.advanceflooringsystems.com](http://www.advanceflooringsystems.com) or you can call us for further clarification if required.

### STEP 5

Finally, finishing the edges:



- Place the tile to be cut (2) on the tile laid last
- Slide a third tile (3) against the wall
- Cut the tile to be placed (2) along the edge of (3)
- Place the cut tile (2) against the wall

### STEP 6

The tiles can be laid without adhesive although it's not recommended, but in doorways, offices, education environments and other heavy-wear installations we recommend the use of a tackifier adhesive. Regular vacuum-cleaning will help maintain the appearance of the tiles. Never use solvents (white spirits, petrol, etc.), as they can affect the colour.

### Recommended Adhesive

Strongbond 65 (recommend application with roller) – supplied by Look Floors.

PS66 for floor installation and UZIN WK222 for wall installation – supplied by Giltedge.

Ultrabond Eco Tack - supplied by Mapei

Advance Flooring Systems Ltd

email: [info@advanceflooringsystems.com](mailto:info@advanceflooringsystems.com)

[www.advanceflooringsystems.com](http://www.advanceflooringsystems.com)

Call us: **0508 238 262**

  
**Advance**  
FLOORING SYSTEMS